



- die-cast zinc alloy frames
- with VDE ground contacts
- possibility of mounting female and male modular units on the same frame
- frames supplied with lock-in tab to attach units
- polarisation on frames
- code pins CR..CX see page 242

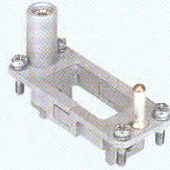
### Warning

the module support frames are marked:

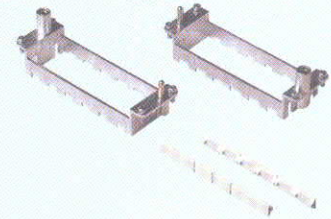
- with upper-case letters **A-B, A-C, A-D** and **A-F** (for use in hoods)
- with lower-case letters **a-b, a-c, a-d** and **a-f** (for use in housings)

Positioning the modules in the frames according to the respective letters is ensuring the specular assembly of modules, for which the hood will be coupled correctly to the housing.

## frames for modular units



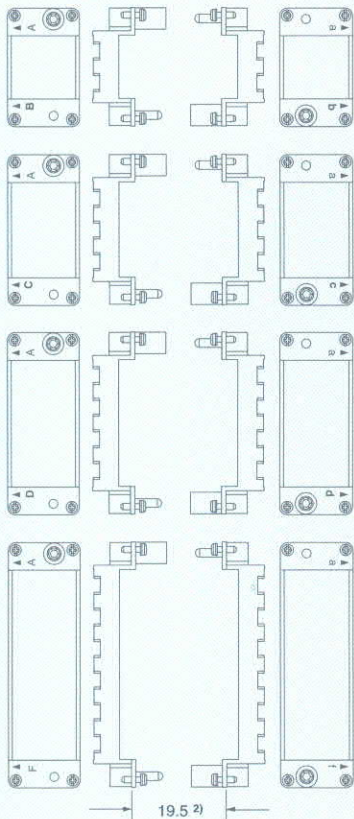
## frames for modular units with lock-in tabs



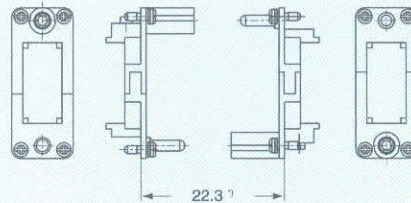
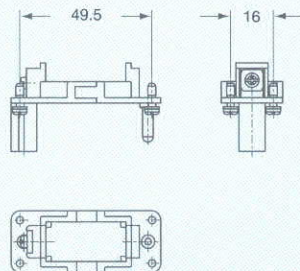
description	part No.	part No.	part No.
for CZ enclosures, size 49.16	<b>CX 01 T</b>		
frames for modular units (module lock-in tabs included)		<b>type for hoods</b>	<b>type for housings</b>
- for 2 modular units		<b>CX 02 TM</b>	<b>CX 02 TF</b>
- for 3 modular units		<b>CX 03 TM</b>	<b>CX 03 TF</b>
- for 4 modular units		<b>CX 04 TM</b>	<b>CX 04 TF</b>
- for 6 modular units		<b>CX 06 TM</b>	<b>CX 06 TF</b>
lock-in tabs for modular units (6 units) dividable		<b>CX CFM</b>	

polarisation of frames with relative identification letters and couplings

**frame for hoods** <sup>1)</sup> **frames for housings**

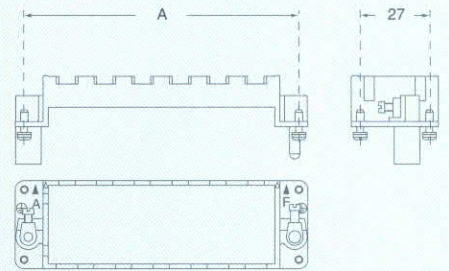


dimensions in mm



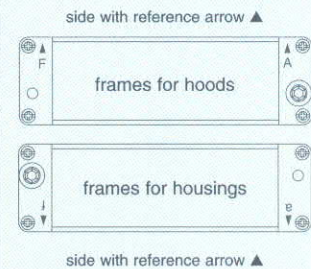
<sup>\*)</sup> distance for electric and fibre optic contacts: max 24 mm  
distance for pneumatic contacts: max 23.5 mm

dimensions in mm



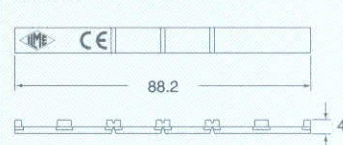
part No.	A (mm) for housings size	
<b>CX 02 TM / TF</b>	44	44.27
<b>CX 03 TM / TF</b>	57	57.27
<b>CX 04 TM / TF</b>	77.5	77.27
<b>CX 06 TM / TF</b>	104	104.27

position of modules (contact side view)



When two or more identical connectors of the MIXO series are used, coded pins are used prevent incorrect coupling. (See pages 242 and 243).

CX CFM



<sup>1)</sup> the frames can be used either in hoods or housings, for a correct coupling please use both frame types (one with upper-case letters and the other with lower-case letters)

<sup>2)</sup> distance for electric and fibre optic contacts: max 21 mm  
distance for pneumatic contacts: max 20.5 mm

dimensions indicated are not binding and may be changed without notice