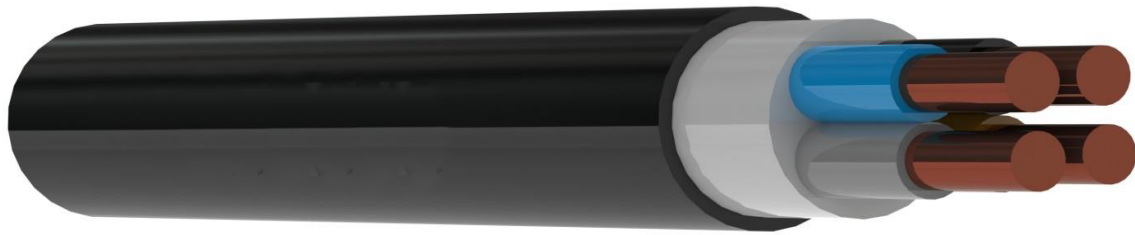


N2XH-K CABLE 0,6/1(1,2) kV



1. Flexible Copper Conductor
2. XLPE Insulation
3. HFFR(LSZH) Filler
4. HFFR(LSZH) Outer Sheath

Application

These cables are used in internal and external places school, hospital, meeting rooms and shopping centers.

Basic Data

Applied Standards	: TS IEC 60502-1
Voltage Rate	: 0,6/1 kV
Conductor Type	: Flexible Copper, Class 5, TS EN 60228
Type of Insulation Material	: XLPE
Type of Sheath Material	: HFFR(LSZH)
Max. Continuous Conductor Temp.	: 90 °C
Max. Short Circuit Temp.	: 250 °C
Test Voltage (AC)	: 3,5 kV
Min. Bending Radius	: 15 x D
Min. Laying Temperature	: -20°C, -50°C (for fixed use)
Other Properties	: [CCa-s1a-d1-a1]
Other Properties	: Flame Retardant Test acc.to IEC 60332-1-2, Smoke Density Test acc.to IEC 61034-2, Corrosive Gas Test acc.to IEC 60754-2, Halogen Free Test acc.to IEC 60754-1,

Technical Features						
Rated Cross Section	Overall Diameter of Cable	Current Carrying Capacity	Conductor DC Resistance at (20 °C)	Net Weight	Delivery Length	
mm ²	mm	Air (A)	ohm/km	kg/km	m	
5G10 k	18,50	74	1,91	737	1.000	
"Unless otherwise specified core colours will be as below."						
Number of Cores	1	2	3	4	5	>5
Core Colours						