



FØLSGAARD®
— YOUR TECHNICAL PARTNER

Følsgaard MODULA Product Guide

Network Access Chamber Systems

Følsgaard Modula

The Modula range of network access chamber systems provide a lightweight, structural, solution for use within multiple sector applications. The Modula chamber system has been designed to significantly reduce the costs of network access chamber installations through time savings.

Due to its twinwall design, individual sections are lightweight meaning they can be manually lifted and stacked on top of each other to reach the specified height required. The Modula chamber system also comes with a wide range of chamber accessories and access covers to provide a complete network access system.

Contents

Følsgaard Modula	02
How it Works	04
How it's Built	06
Measuring a Chamber	08
Chamber Sizes	09
Chamber Accessories	10
Covers	11
Industry Experts	12



How it Works

Modula is manufactured in 150mm deep sections that stack on top of each other to reach the desired depth. Each ring section is castellated to positively interlock with the unit above and below.

Modula Product Benefits

Variability in Size

Modula offers a wide range of chamber dimensions up to 900x900mm. See page 9 for all standard Modula chamber sizes available.

Lightweight

Due to the sectional, twinwall design all Modula 150mm sections are under 11kg in weight, making it suitable for single operative lift under manual handling regulations.

Material

Modula from Polypropylene (PP) which possesses excellent strength to weight properties.

Fast and Easy to Install

Modula chambers are significantly faster to install than conventional alternatives, with complete installations typically taking up to one hour. With the added flexibility of creating duct entries on-site, in-situ with standard hole saw or drill. Modula also has the added flexibility of being able to be cut around and built over existing networks.



Strength

Modula has been extensively tested to ensure that it meets the loading requirements up to B125 in a variety of installation environments. The loadings match the vertical loading categories recognized by EN124 gully tops and access tops for vehicular and pedestrian users.

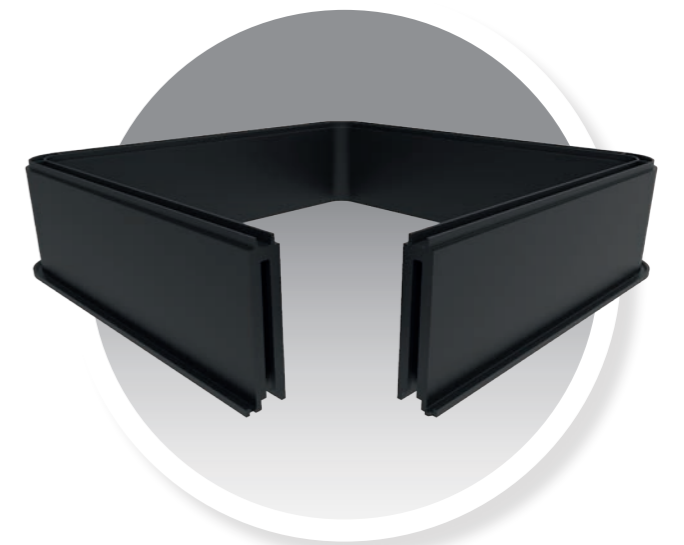
Pre-drilled for ease of Connection

Easily knocked out duct caps on all 4 sides of each Modula ring section allow for quick installation at different depths and remove the need for power tools de-skilling the installation for the contractor.

Smooth Outer Wall with Lip to 'Key In'

Smooth Outer Wall with Lip to 'Key In': Gaps in the outer wall will negatively impact the effectiveness of compaction around the chamber system. The chambers have a smooth outer wall and an outer lip which keys into the backfill.

Duct entries can easily be drilled on site or can be pre-fitted to give consistent spacing and internal wall finish every time



How it's Built

Modula chambers are formed by combining and interlocking ring sections, that are stacked one on top of each other to reach the specified depth required on-site.

The Modula range then allows installers to simply place, connect up tubes or ducts, backfill and walk away.



Rapid and Easy Installation

Step 1:

Remove any soft areas and place the 1st ring section into the desired location ensuring it is level.



Step 2:

Continue building each ring section. Interlocking them on top each other by pressing a ring section firmly onto another until the locking into place.

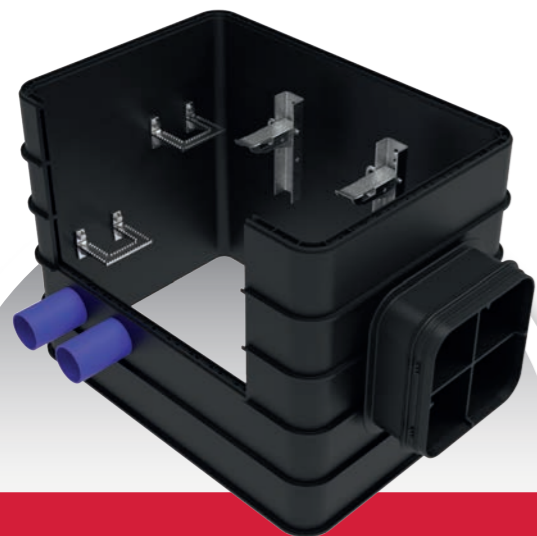


Step 3:

Once construction is complete install the required chamber accessories such as steps, duct entries and access cover. A range of cover options can be found on page 11.

Step 4:

Complete installation with backfill and surrounding surface material specified.

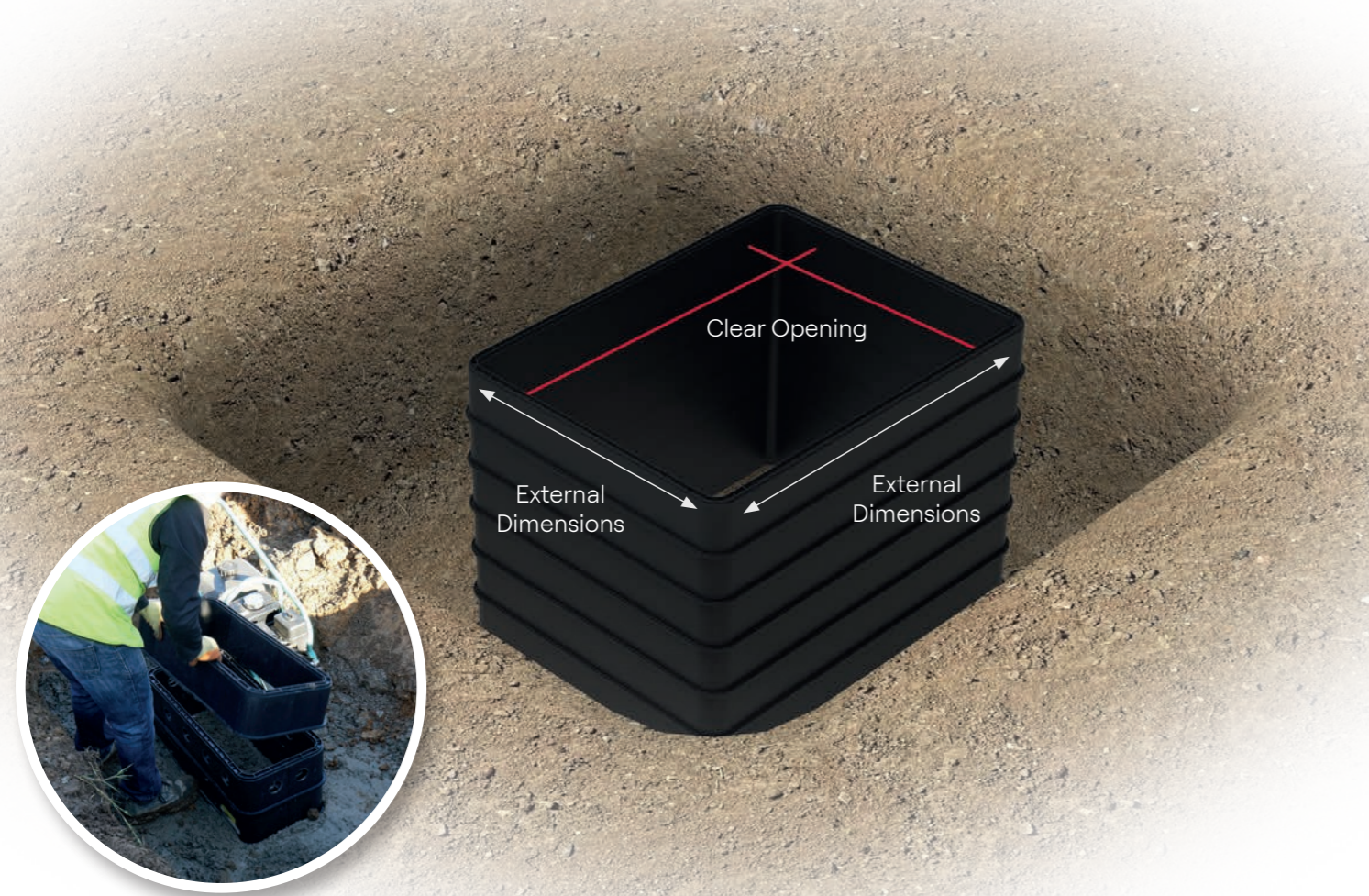
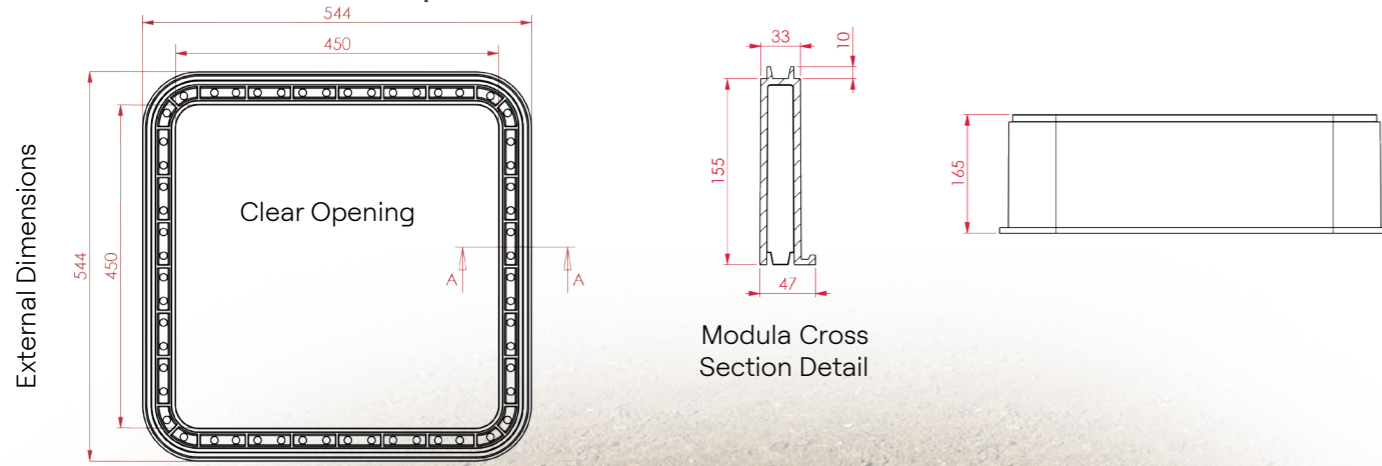


Cable management accessories are easily fitted to the Modula's internal sidewall for keeping cables tidy within the chamber.

Built by stacking ring sections to the required depth, each Modula part weighs under 11kg, making it suitable for a single person lift under manual handling regulations. Cable management and duct entries provide a complete chamber systems solution for a range of sector applications.

Measuring a Chamber

Network access chambers sections are measured by the measurement taking from inside of the chamber. Attention should also be paid to the external dimensions when deciding whether the network access chamber will fit into the area required.



Chamber Sizes

Clear Opening		Externals Dimensions	
Length (mm)	Width (mm)	Length (mm)	Width (mm)
150	150	243	243
300	300	393	393
450	300	543	393
450	450	543	543
600	300	693	939
600	450	693	543
600	600	693	693
675	300	768	393
675	600	768	693
675	675	768	768
700	300	793	393
700	400	793	493
750	250	843	343
750	300	843	393
750	600	843	693
750	675	843	768
750	750	843	843
900	300	993	393
900	450	993	543
900	600	993	693
900	750	993	843
900	900	993	993

Please contact a sales representative to discuss cover dimensions and loading options for the various chamber sizes.



Chamber Accessories

Using access chamber system accessories can help save even more time. Our chamber options & accessories range allows installers to simply place, connect up tubes or ducts, backfill and walk away.

1. Access

Chambers deeper than 600mm will usually require steps or ladders for access. We supply high quality bolt-on steps to suit customer requirements.

2.

Ducts, tubes and pipes come in many size and wall configurations and we have developed fittings which provide for the simple transit of these into our chambers. Whilst duct entries can always be made very easily on site, our pre-fit service gives consistent spacing and internal wall finish every time.

3. Cable Management

Based upon Openreach and France Telecom accredited galvanised steel cable and joint management and our own high-strength plastic fittings, these accessories will keep cables dressed perfectly within the chamber.

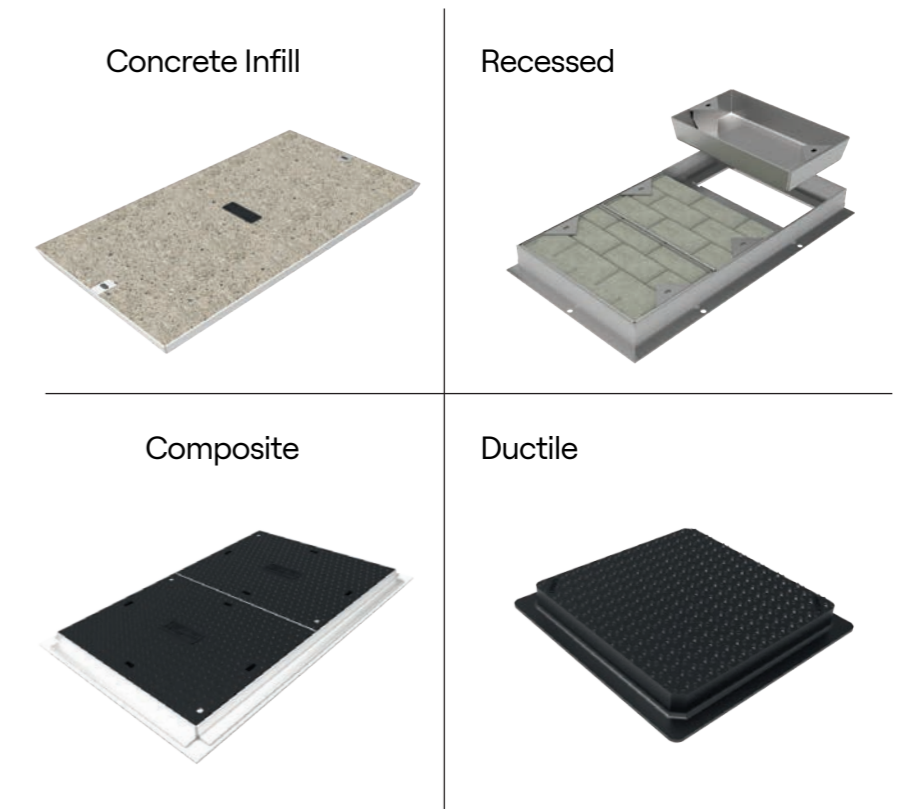
4. Bases

These are securely fitted to a ring section or bottom of a chamber to provide a clean and anti-slip finish.



The range of access covers provide customers with a complete underground network access system as they are designed and manufactured from a range of materials to complement our chamber ranges.

The range can be tailored to meet specified loading requirements from pedestrian up to carriageway duty and are available in a wide range of clear opening dimensions and depths.



Options

- Bespoke customer badging
- Various frame depths and types
- Security options
- Large range of sizes available

Industry Experts

Følsgaard Chamber products are innovative, lightweight and significantly reduce costs of in-situ construction through time savings. The integrated systems approach offers clients a complete range of access chambers, access cover and cable protection systems. These products have been installed worldwide in Telecoms, Highways, Rail/Light Rail, Water and Power & Energy applications. Our products are used within many different applications within each sector from buried cable routes to network access solutions.

Access Chamber System:

Følsgaard access chamber systems are adaptable to the unique requirements of each site. This means ordinary site tools can be used to retrofit chamber systems around existing networks by drilling duct entries. The seamless integration across the Følsgaard product range enables the construction of bespoke systems that significantly reduce costs of access chamber construction through time savings. Our chamber options & accessories range allows installers the ability to simply place, connect ducts, backfill and walk away.

Cable Protection:

Følsgaards cable protection systems offer innovative, lightweight, secure cable protection systems that have been used worldwide in a range of sectors and applications. Følsgaards cable protection systems comprise of 1 metre long units that connect together allowing for rotation in the units to deal with turns, elevations, natural curvature and other obstacles. Due to their light weight properties our cable protection systems offer significant health and safety advantages over traditional systems.

Access Covers:

The Følsgaard range of access covers provide customers with a complete underground network system, designed and manufactured from a range of materials to complement our access chamber systems. The range can be tailored to meet specified loading requirements from pedestrian up to carriageway duty and are available in a wide range of clear opening dimensions, depths, security features, frame types and bespoke badging. The cover range consists of concrete infill, recessed, composite, ductile iron and steel fabricated.





FOLSGAARD®

HF YOUR TECHNICAL PARTNER

HQ: Hans Følsgaard A/S
 Theilgaards Torv 1
 DK-4600 Køge
 T: +45 4320 8600
 CVR. | VAT: 55 02 88 18
 Ellemosen 4 DK-8660 Ry

Hans Følsgaard AS
 Bark Silas Vei 8
 NO-4876 Grimstad
 T: +47 3709 0940
 Org. No. | VAT: 940 455 979

Hans Følsgaard AB
 Sjöängsvägen 17
 SE-192 72 Sollentuna
 T: +46 10 601 59 91
 Org.nr | VAT: SE 556572164301

Hans Følsgaard GmbH
 Hüttenkamp 5
 D-24536 Neumünster
 T: +49 4321 963 8440
 Amtsgericht Kiel HRB 18459 KI
 MwSt: | VAT: DE311463225
 Geschäftsführer Bent B.
 Madsen

HF Hans Foelsgaard Electrical Solutions
 (Tianjin) Co. Ltd
 No 18, North of Fuyuan Avenue, Tianji,
 China. T: +86 2222 133211